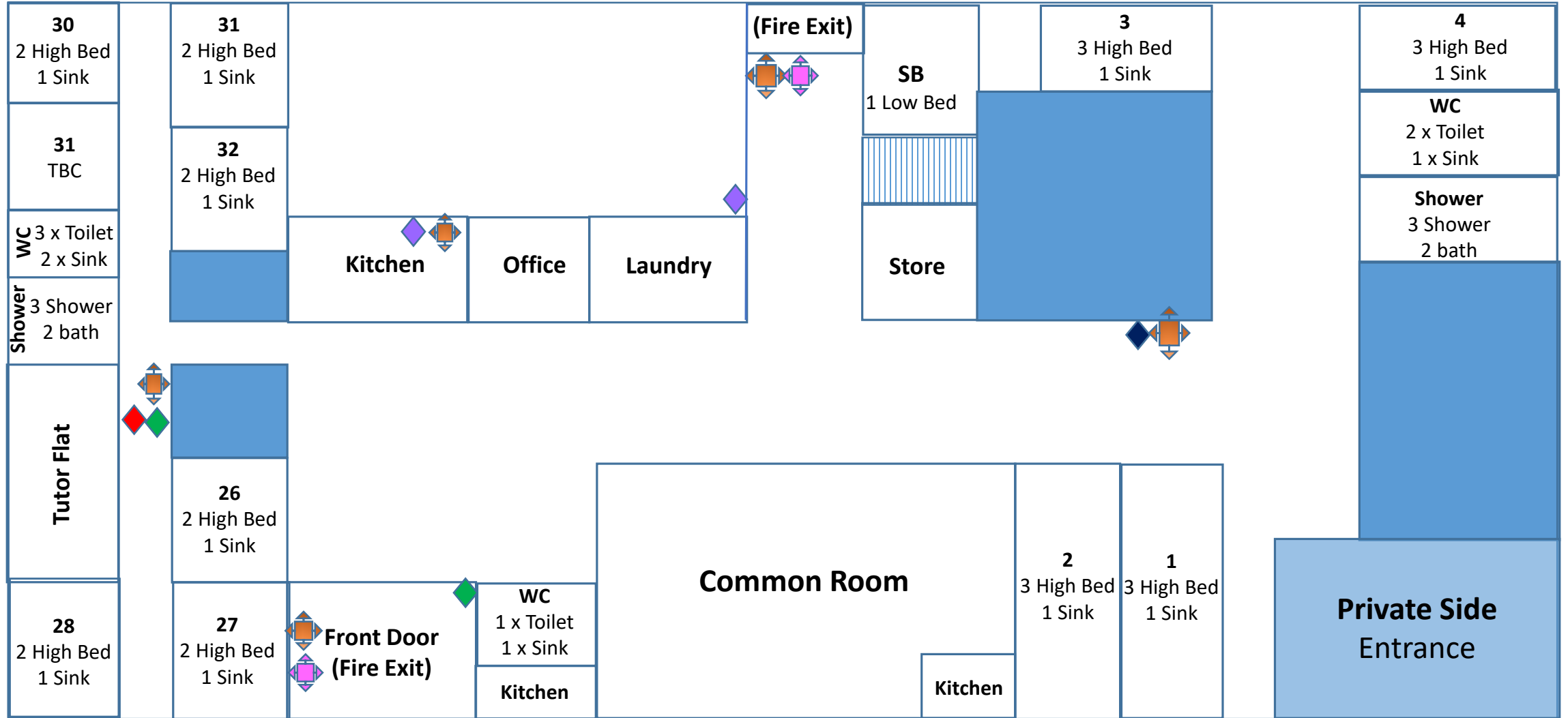


# Rushebrookes Ground Floor.

- ◆ Type A = Water
- ◆ Type B = CO2
- ◆ Type C = Foam
- ◆ Type D = Fire Blanket
- ◆ Breakglass
- ◆ Door Release
- ◆ Type D = Powder



Rushebrookes 1st Floor.

- ◆ Type A = Water
- ◆ Type B = CO2
- ◆ Type C = Foam
- ◆ Type D = Fire Blanket
- ◆ Breakglass
- ◆ Door Release
- ◆ Type D = Powder

