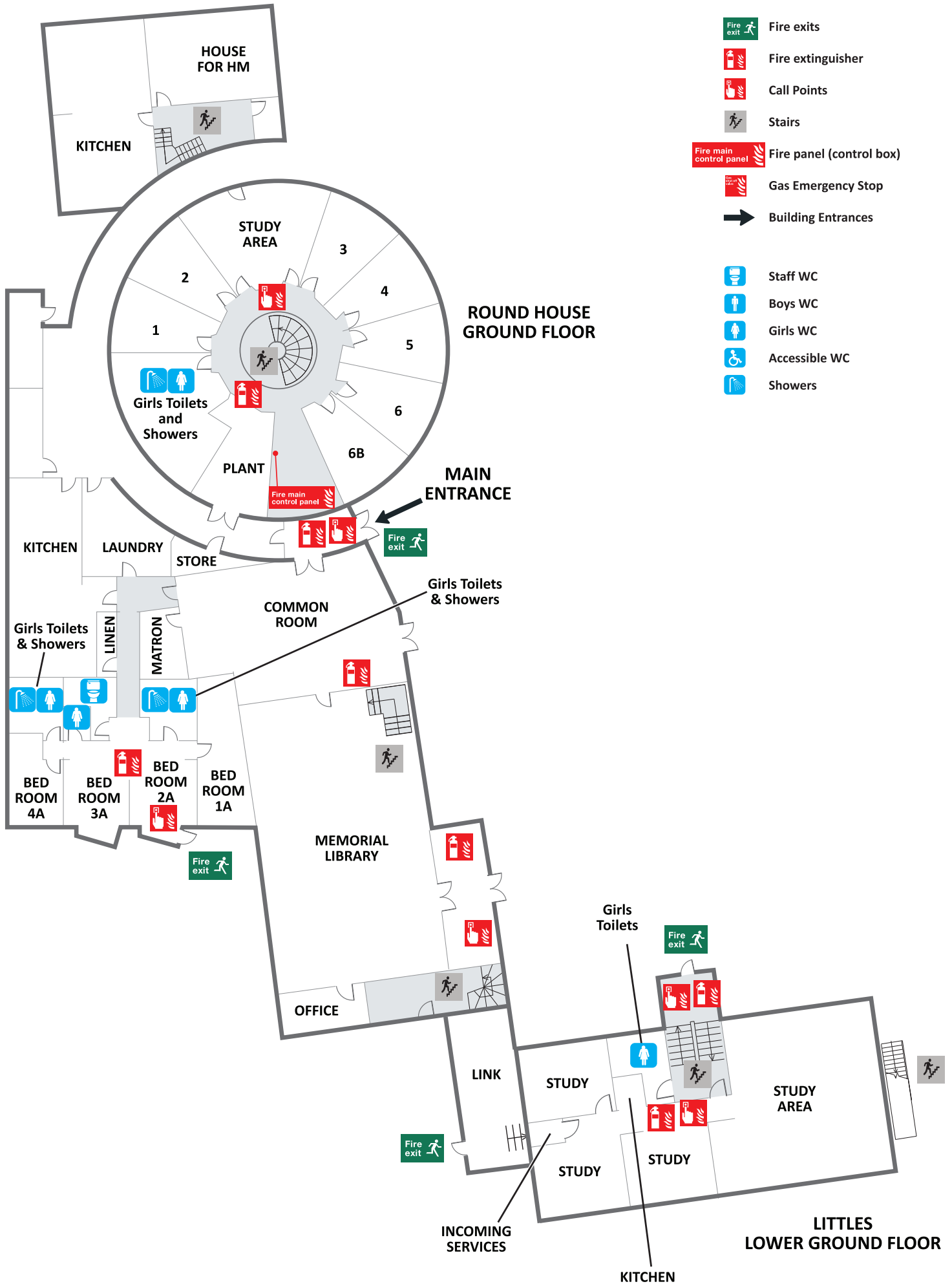


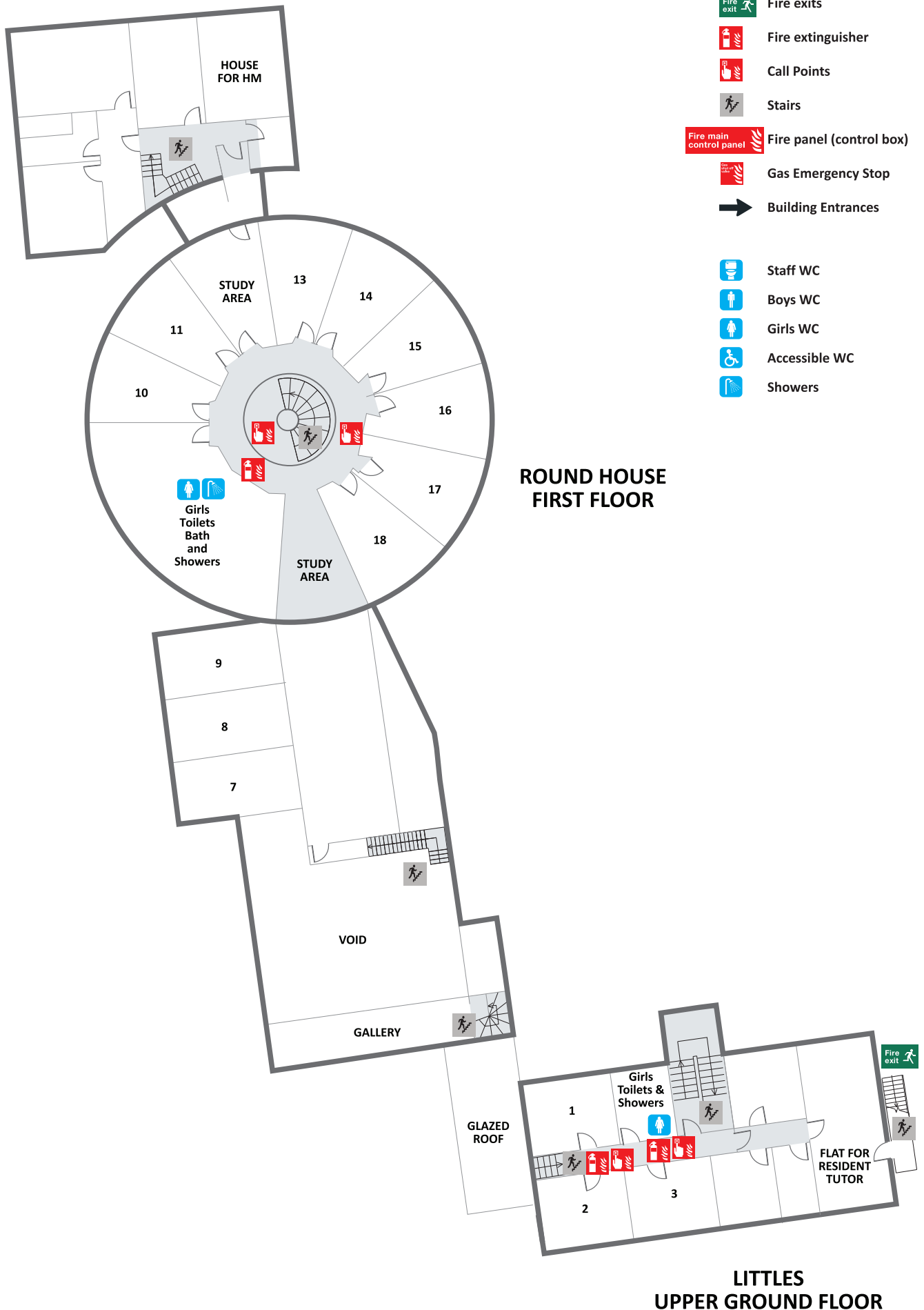


Round House Ground Floor and Littles Lower Ground Floor



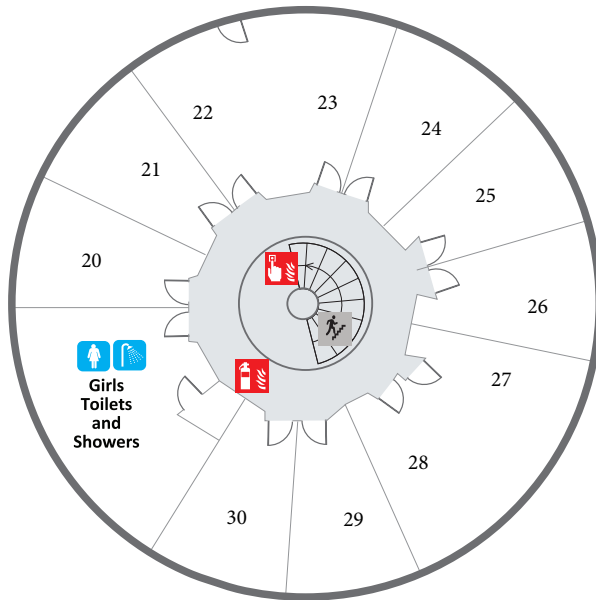
-  Fire exits
-  Fire extinguisher
-  Call Points
-  Stairs
-  Fire main control panel
-  Fire panel (control box)
-  Gas Emergency Stop
-  Building Entrances
-  Staff WC
-  Boys WC
-  Girls WC
-  Accessible WC
-  Showers













Round House First Floor and Littles Upper Ground Floor



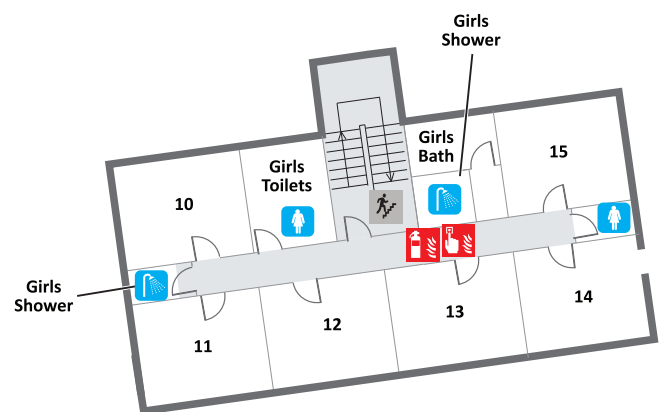
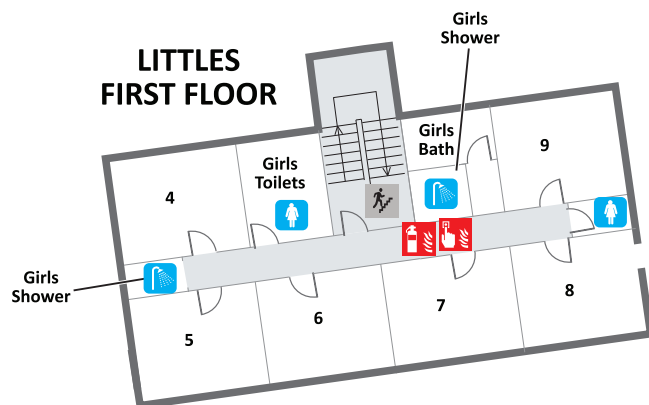
Round House Second Floor and Littles First & Second Floor

ROUND HOUSE SECOND FLOOR



-  Fire exits
-  Fire extinguisher
-  Call Points
-  Stairs
-  Fire panel (control box)
-  Gas Emergency Stop
-  Building Entrances
-  Staff WC
-  Boys WC
-  Girls WC
-  Accessible WC
-  Showers

LITTLES FIRST FLOOR



LITTLES SECOND FLOOR